

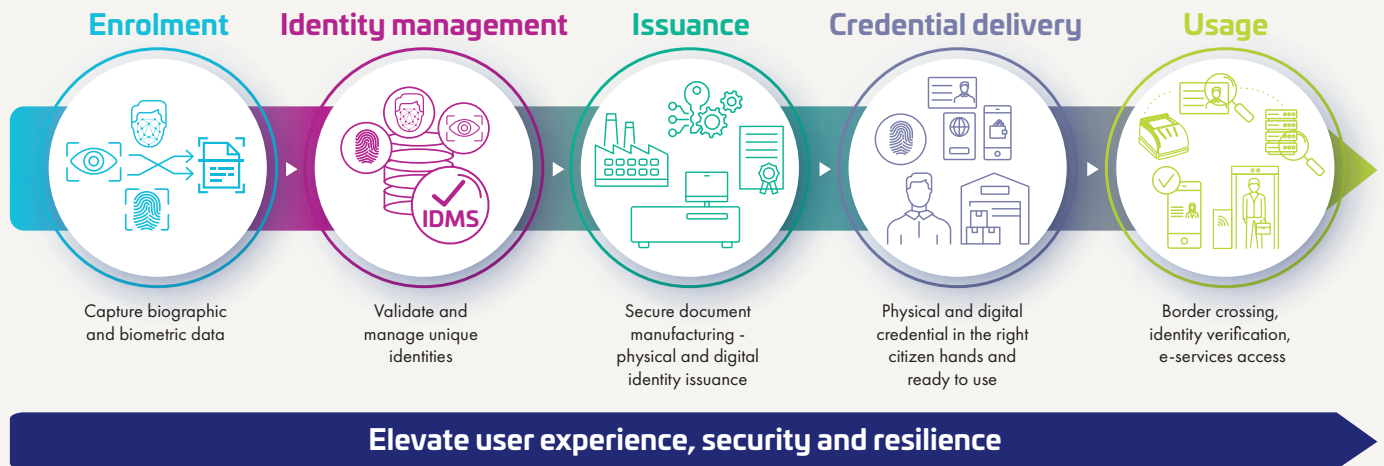


Thales Civil Identity Suite

The integrated approach
to secure identity

THALES
Building a future we can all trust

A one-Stop-shop for complete civil identity value chain



Major trends:

As governments strive to enhance public services and combat increasingly serious threats to the state and its citizens, three powerful trends are reshaping the civil identity landscape:

Citizen-centricity

With over 1 billion digital credentials expected by 2027, citizens are increasingly seeking accessible, efficient, transparent, and secure public services, emphasizing digital transformation, personalized experiences, and opportunities for participation in service improvement.

Combating cyber-attacks

In 2023, in the US, an identity theft occurs every 30 seconds, prompting governments to enhance their focus on cybersecurity to combat the rising tide of cybercrime, which leads to identity fraud, supply chain disruptions, and impacts citizen trust.

Adapting to emerging technologies

Since 2016, the EU has introduced over 10 major regulations on privacy and digital services, including the GDPR, to safeguard citizens' data. The rapid and continuous advancement of technologies such as AI and biometrics necessitates ongoing efforts to comply with evolving regulations, ensuring the protection of citizens while addressing critical ethical considerations.

Government decision makers face numerous evolving challenges in implementing modern identity schemes, including:

- **Fighting fraud and mitigating service disruption:** Sophisticated forgery, counterfeiting, and impersonation techniques, coupled with threats from malicious AI and quantum computing, demand comprehensive security.
- **Regulatory compliance and protecting Citizens':** Securing sensitive data against breaches and adhering to rigorous privacy regulations are essential.
- **Ensuring business continuity:** Providing resilient infrastructure that supports the issuance of both physical and digital documents is crucial.
- **Delivering value for money:** Programme must be delivered on time, within budget, and be truly future-proof, adapting to changing needs.

Thales Civil Identity Suite provides a complete, one-stop solution for modern civil identity management. Covering every stage from Enrolment to Usage, our suite creates the foundation for a contemporary Digital Public Infrastructure (DPI), enabling governments to empower their citizens and transform public services.

Why choose Thales Civil Identity Suite?

For governments looking to introduce a modern identity programme, Thales Civil Identity Suite offers:



Holistic security that protects Citizens and builds trust and confidence

Security by Design principles are applied throughout our solutions, from development to deployment, at every stage of the identity journey, and for the scheme's entire lifetime. The fully integrated approach of our Civil Identity Suite is key to ensuring that citizens' data and government services are always fully protected, boosting trust and confidence in the identity ecosystem. Our cybersecurity solutions safeguard the entire identity infrastructure, with capabilities including cyberattack detection and response, as well as vulnerability management.



Optimum combination of digital and physical worlds to elevate the user experience

Our inclusive user experience is designed to maximize adoption by offering a wide range of enrollment and service delivery channels, combining physical and digital identities to extend choice and convenience for citizens. Both citizens and government employees benefit from this approach; intuitive user interfaces and workflows simplify operations and support, ensuring swifter service delivery. By providing a seamless blend of security and convenience, we enhance adoption and inclusivity, fostering wider acceptance among the populace and simplifying the daily tasks of government staff. Our user-centric solutions and services are based on a streamlined system, making government operations more efficient and responsive to the needs of citizens.



Scalability and flexibility for future-proof solutions

Our modular architecture provides unparalleled flexibility and scalability. Governments can adopt the entire suite or individual elements, and scale functionality as needed without vendor lock-in, ensuring long-term partnerships and adaptability.

Why work with Thales?

With more than **300 active identity programs** worldwide, Thales is the leader in secure identity documents with over **30% market share*** and recognized as number one in digital identity**. We address environmental issues and design our biometric solutions in accordance with strict essential rules and ethical principles. We rely on local stakeholders to strengthen national identity systems.

Our cybersecurity portfolio protects identities and data, along with all the paths that lead to it, encompassing services that include compliance and governance audits, threat detection and penetration tests. More than **30,000 organisations across the world** depend on our solutions to issue and verify identities, grant access to digital services, encrypt data, protect applications, secure digital transactions and counter cyberattacks.

JOIN THE LEADING EDGE OF CIVIL IDENTITY MANAGEMENT

Thales Civil Identity Suite supports governments in every step of the identity journey, from strategic planning to seamless implementation. Our comprehensive solutions create an efficient, flexible, and secure infrastructure, empowering both governments and citizens in the digital age.

* ABI Research, Government and HC ID cards Q1 2024 Phil Sealy, Research Director

** 2024 Juniper Research Competitor Leaderboard.



6 rue de la Verrerie
92190 Meudon
France

[thalesgroup.com](https://www.thalesgroup.com)

