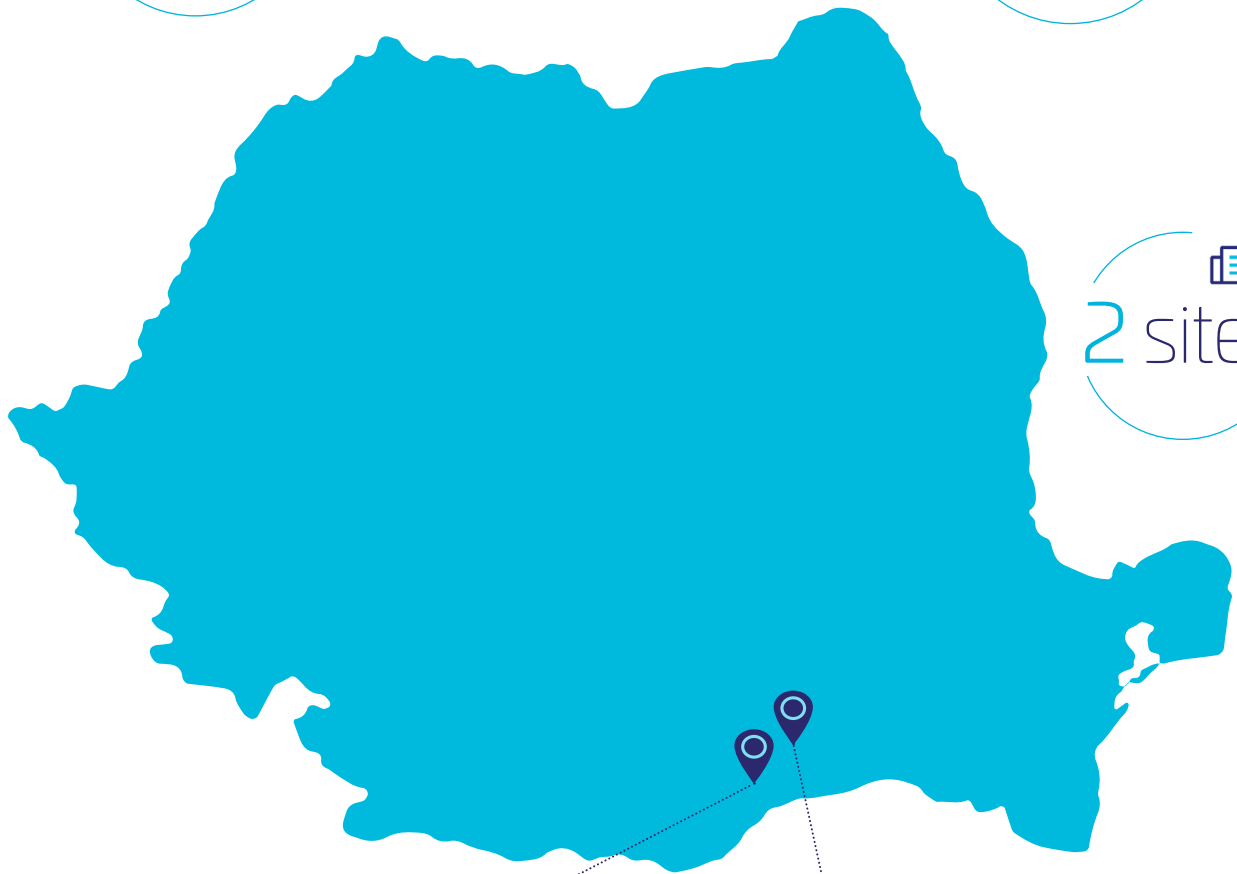


Thales in Romania

Factsheet



Magurele

- ELI-NP Research Institute, Laser center

Bucharest

- HQ
- Defence solutions
- Passports, credit cards
- Cybersecurity products
- ATM
- Engineering competence center (ECC)



Did you know?

- Romania hosts one of Thales's three leading engineering competence centres
- Thales delivered the world's most powerful laser system to Romania, **capable of 10 petawatt shots, equivalent to 10% of the sun's power on Earth.**
- **Romanian electronic passports are produced by Thales**
- Most of the airports in Romania use Navigation Aids (NAVAIDS) from Thales.
- **One of the key pillars of the Group's Cloud Centre of Excellence – Digital Accelerator is part of Thales Romania.**

About **Thales**

Thales is a global leader in advanced technologies specialized in three business domains: Defence, Aerospace, and Cyber & Digital. It develops products and solutions that help make the world safer, greener and more inclusive. The Group invests more than €4 billion a year in Research & Development, particularly in key innovation areas such as AI, cybersecurity, quantum technologies, cloud technologies and 6G. Thales has more than 83,000 employees in 68 countries. In 2024, the Group generated sales of €20.6 billion.

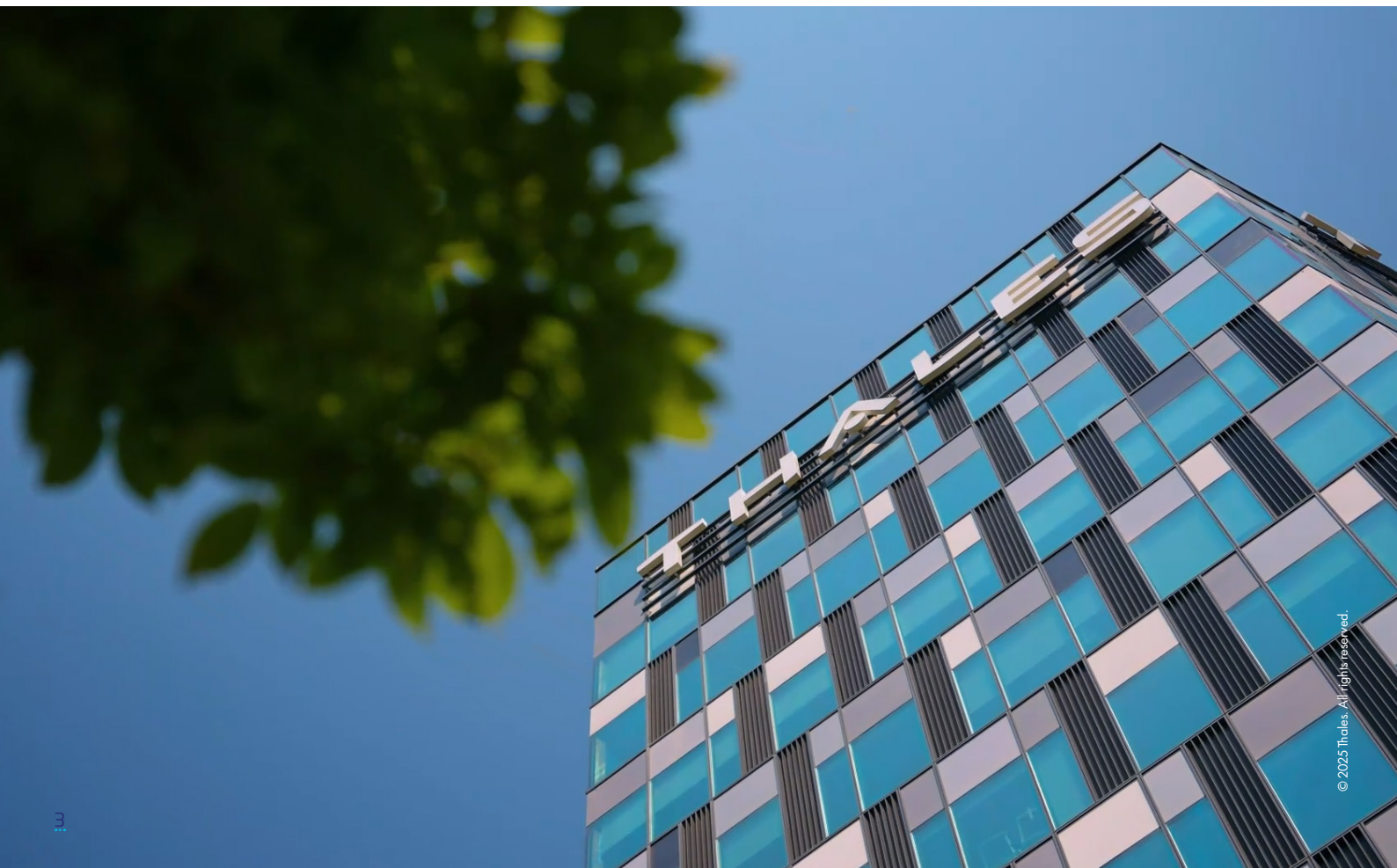
Thales in Romania

Thales began its activities in Romania more than 20 years ago, as a supplier to the Romanian armed forces. Since then, the Group has grown and diversified its portfolio and local capability to include engineering for all the major markets of the Group, as well as research.

The Engineering Competence Centre (ECC) in Romania is staffed with close to 600 engineers and serves as a regional hub for the Group's software development needs for all of its global business units, as well as activities in operations, maintenance and training.

Furthermore, Thales Romania hosts the Group's Custom Development Practice, one of the key pillars within the Cloud Centre of Excellence (CCoE), including a team of highly skilled software developers, with expertise in full-stack development and CI/CD (continuous integration and continuous delivery/deployment).

Thales is also an active player in laser research in Romania and partner to the Extreme Light Infrastructure – Nuclear Physics (ELI-NP) programme, which developed the High-Power Laser System (HPLS), the most powerful system of its kind in the world. Designed, developed and maintained by Thales, this system allows ELI-NP to be the most advanced research facility in the world in the field of photonuclear physics.



Defence

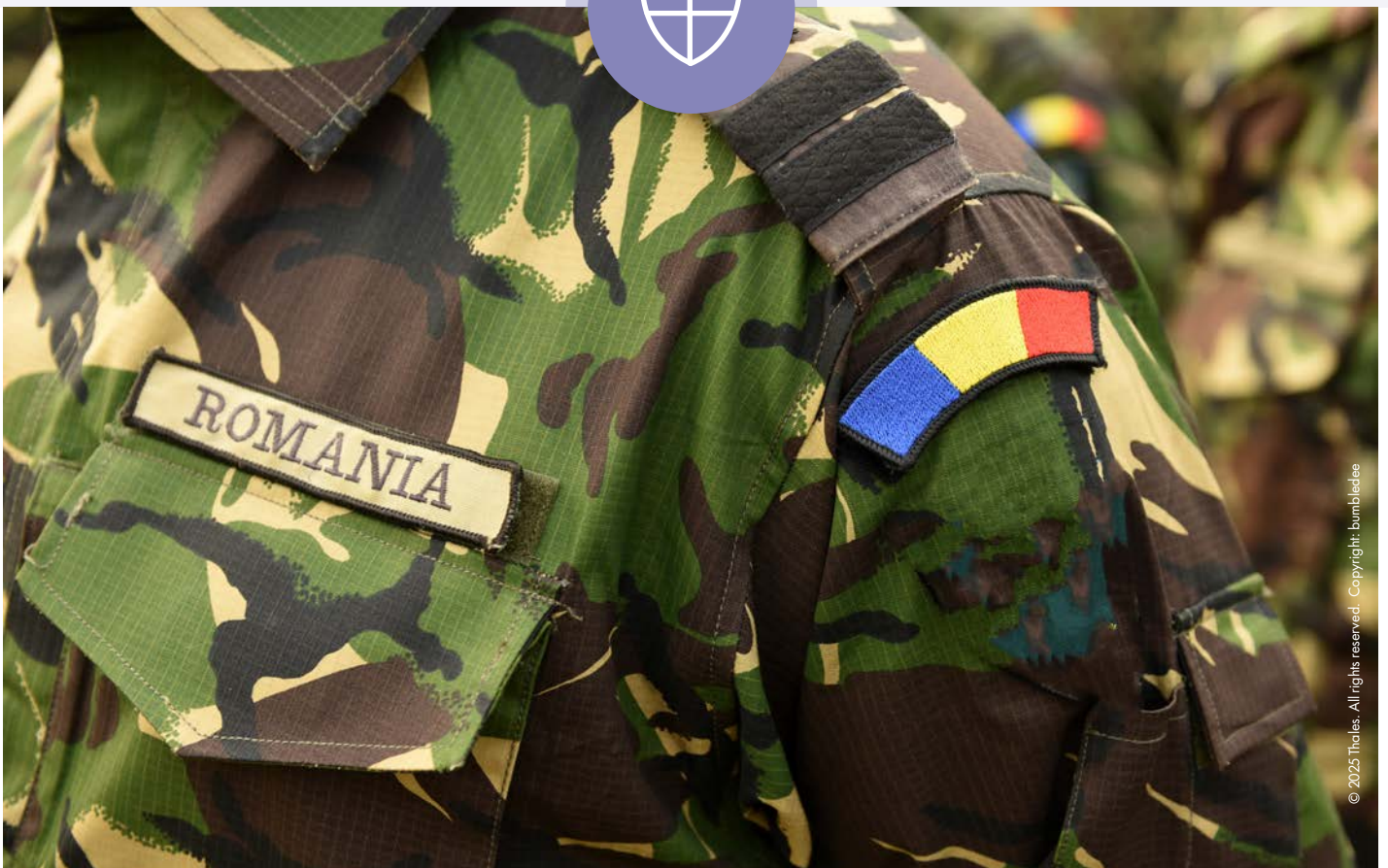
Addressing a growing range of ever-changing threats, Thales supports nations and their armed forces to make the right decisions at the right time through advanced technologies, solutions and services – in the land, sea, and air domains. From cybersecurity to AI, we are constantly innovating to enable armed forces to achieve operational superiority.

As a trusted partner of the Romanian armed forces, Thales has supplied various military systems, from tactical radios to encrypted military telecommunications solutions and underwater technologies embedded into naval, land and air platforms.

Thales is the supplier of airborne anti-submarine warfare systems to the Romanian Navy, which are fitted onboard the Puma Helicopters operated onboard the Type 22 Frigates, providing a significant capability multiplier for the NATO presence in the Black Sea.

The Romanian ECC contributes to several defence programs:

- Over 100 engineers are developing software for above water systems and under water systems for Naval Forces across the world. This includes software for Tacticos, the Combat Management System for naval warfare and maritime security operations, as well as other software for naval sensors and for navigation systems.
- Since 2024, a new team in ECC Romania is developing software for a Command & Control system used to ensuring airspace sovereignty of our customer's boundaries.
- In addition, a newly established team is contributing to Training & Simulation projects, including Tactical Indoor Simulation System (TACTIS), one of the largest virtual land vehicle training centres deployed with the Royal Netherlands Army. Alongside colleagues from France, Switzerland and UK, the team supports civil security operators and Armed Forces to prepare their missions in the air, land, sea and cyberspace.



Civil Aviation

Thales, a major player in avionics, aircraft cabin systems, air traffic management and digital identity, is helping to build the sustainable, connected aeronautics of tomorrow by offering a unique passenger experience in airports and in flight, optimising flight operations and enabling the safe integration of new types of aircraft in airspace, capitalising on cutting-edge technologies such as AI and cybersecurity.

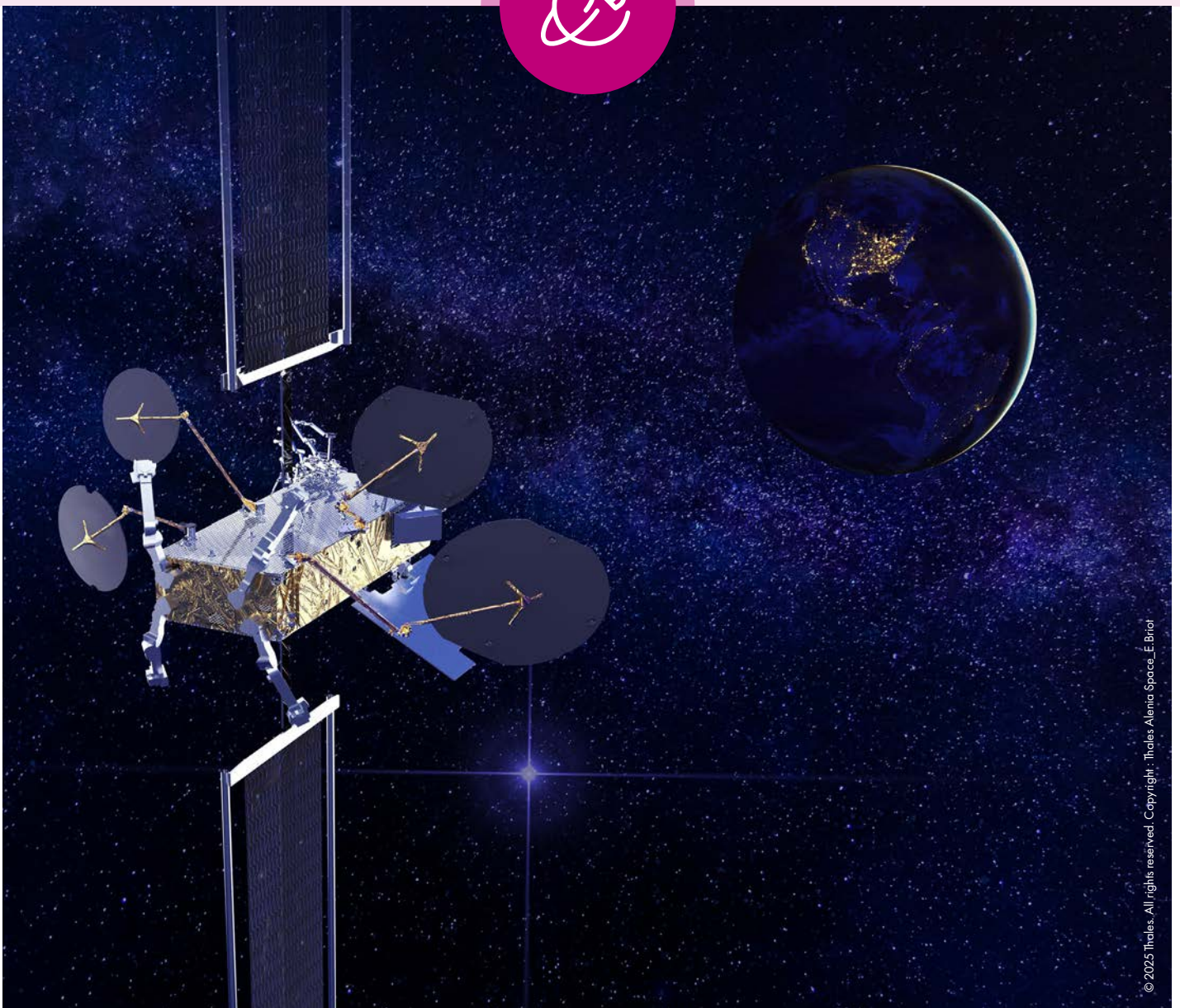
At the Romanian ECC, over 70 engineers work on the safety and the future of the air traffic by delivering software solutions for air traffic management as well as in system integration and support. In Airspace Mobility Solutions, the team contributes to Topsky-ATC, the world's most advanced air traffic control automation solution, to 4-FLIGHT, an innovative ATM system used for France's en-route control, and also to the OneSky, the world's most advanced integrated civil-military ATM system built for Australia.



Space

Thales Alenia Space offers institutions, governments, companies and operators a wide range of space solutions – satellites, ground segments, end-to-end-systems – for telecommunications, satellite navigation, earth observation, science and space exploration.

More than 80 engineers from the Romanian Engineering Competence Centre dedicate their knowledge and skills to projects for Thales Alenia Space. Their work covers ground and on-board (embedded) systems for projects such as Space Inspire™ solution - a software-defined, ultra-flexible and fully reprogrammable in orbit satellite, Meteosat 3rd generation - a new generation of meteorological satellites, Lunar Gateway - a cislunar space station that will orbit around the Moon. The team is also developing components of the SpaceOps product line used for the configuration and monitoring of telecom geostationary satellites, including the Eutelsat KVHTS satellite, host to the most powerful processor ever put into orbit.



Cyber & Digital

In a world where the number of digital connections and cyberattacks are constantly growing, Thales provides products and services which create a circle of trust between people and the digital services they rely on. The world's leading companies and governments in 180 countries trust us to secure people's and objects' identities, personal and sensitive data and their most critical applications. Our cybersecurity and digital identity technologies are designed to offer solutions for a more sustainable digital transformation.

In the Romanian civil identity sector, Thales delivers all the raw materials for the Romanian passport production along with support and maintenance services, including blanks production, enrolment and passport personalization. Thales also supplies optical document readers for border control and finished smartcards for Romanian Digital Tachograph use.

The Regional Delivery Centre located in Bucharest deploys services and maintains Secure Document Issuing Systems, Automated Fingerprint Information Systems as well as eGates projects, and provides strong knowledge for Fly to Gate and Border Management System through a delivery team of 30 engineers.

To date, the local team has been involved in deploying 20+ projects worldwide.

In the Romanian banking sector, Thales provides a wide range of secure digital banking, cards and digital payment solutions, while in the telecommunication area, Thales works with mobile network operators supplying them with SIM cards, MIM cards and services for eSIM. Moreover, over 90% of the tokens used in electronic signatures in Romania are provided by Thales.

Thales is also a leading supplier of Hardware Security Modules to protect data transfers in the Romanian Government and Critical Infrastructure.



Engineering Competence Centre (ECC)

Established in 2019 and today staffed with close to 600 engineers, the Engineering Competence Centre (ECC) in Romania is a Group-wide centre delivering software development solutions in a number of core Thales business areas, from space and defence, to security and aeronautics. Today, it serves as a regional hub for the Group's software development needs.

In addition, the ECC contributes to Thales Central functions like Information Systems and Thales Central Engineering.

With cybersecurity being a very important asset in any application, whether public, private or hybrid, Thales' engineers are focusing their attention on this aspect now more than ever. Longer term, Thales in Romania aims to be a key contributor within AI (Artificial Intelligence) and Digitalisation.



Sustainability commitments



Building a future we can all trust is our purpose at Thales.

Thales in Romania is strongly committed to sustainability. This includes implementing our “Low Carbon Future Strategy” around the world, aiming for Net Zero emissions by 2040. In this respect, Thales in Romania has increased its efforts of reducing CO2 emissions, limiting energy consumption, reducing water consumption on site, and has also developed its waste management programme.

The team in Romania is also involved in actions giving back to the local community through the support of programmes such as Plantfest, one of the largest reforestation initiatives in the country.

At the same time, Thales is taking a proactive stance to create an inclusive and equitable workplace encompassing wellbeing and the diversity of all our employees and stand by a strong ethics and integrity policy based on the highest international standards.



Local Partnerships



Thales in Romania is active in a variety of research, academic and industrial partnerships.

The cornerstone of our partnership strategy includes the ELI-NP (Extreme Light Infrastructure-Nuclear Physics) research facility. The team in Romania directly contributed to the installation of the system, and is currently operating this unique scientific instrument, together with the ELI-NP experts.

Continuing the successful partnership with the Romanian military and industry for more than 20 years, a long-standing cooperation with Aerostar SA has evolved into a Key Industrial Partnership, where Thales has supplied Identification Friend or Foe (IFF) technologies to the majority of air, ground and naval military platforms in Romania.

Thales also collaborates with the Romanian military and academic establishment in European Defence Fund initiatives, where the Group is ideally positioned to leverage not only local resources, but also our wider global footprint.

In the area of education, Thales has developed strategic partnerships with Politehnica University of Bucharest on educational projects aiming at developing young talents while building technical competences and skills for the future within its well-established Internship Programme dedicated to students and early graduates.



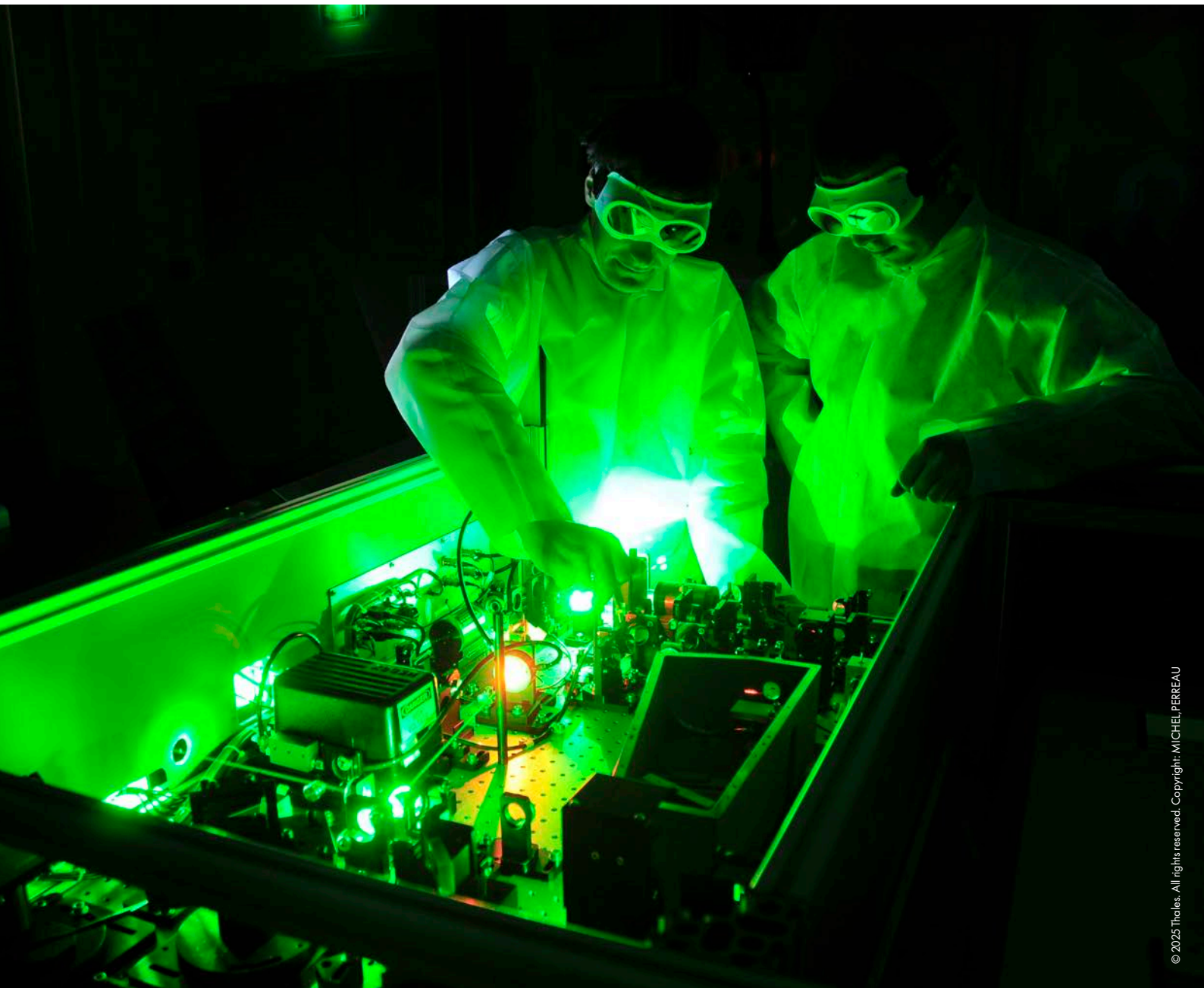


Research & Innovation

In 2023, the European laser research centre, Extreme Light Infrastructure- Nuclear Physics (ELI-NP) and Thales celebrated the 10th anniversary of their partnership around the world's most powerful laser system, capable of providing 10 petawatt shots.

Designed, developed, installed and maintained by Thales, this technology allowed ELI-NP to be the most advanced research facility in the world in the field of photonuclear physics.

This laser is expected to contribute to significant societal advances: ignition of fusion to generate a new energy source, novel approaches to cancer diagnostics and therapeutics, exploration of innovative nuclear waste treatments, reducing the size of space waste.



Annexes/ List of Historical References



Defence



In 1996, Thales transferred to Romanian partners the technology process for building over 3000 tactical radios for the Romanian Armed Forces, which were operated in NATO, EU and other international missions.



In 2013, the Romanian Navy selects Thales to supply an airborne anti-submarine warfare system, fitted onboard the Puma Helicopters operated onboard the Type 22 Frigates



Research & Innovation



In 2013, Thales joins the ELI-NP program, delivering the world's most powerful laser system in 2019



In 2019, Thales establishes in the Romanian Engineering Competence Centre (ECC)

THALES

Building a future we can all trust

ORHIDEEA TOWERS,
15A Orhideelor St., 5th Floor,
RO-060071, Bucharest, Romania

Phone: (+40) 374 41 24 01
Fax: (+40) 374 09 25 40

ro-thr-contact@thalesgroup.com

