

Edge Metal Card

Sleek metal card: metallic
edges with engraving






Target your affluent to high-net worth customers with the **Edge Metal Card**: a sleek, edge-to-edge metal core card combining premium feel, design flexibility, and accessible pricing. Ideal for segmentation, premium upgrades, or second card programmes.

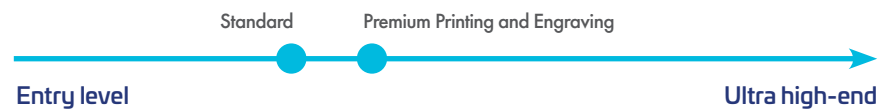
Make your dream card a reality.

Edge Metal Card

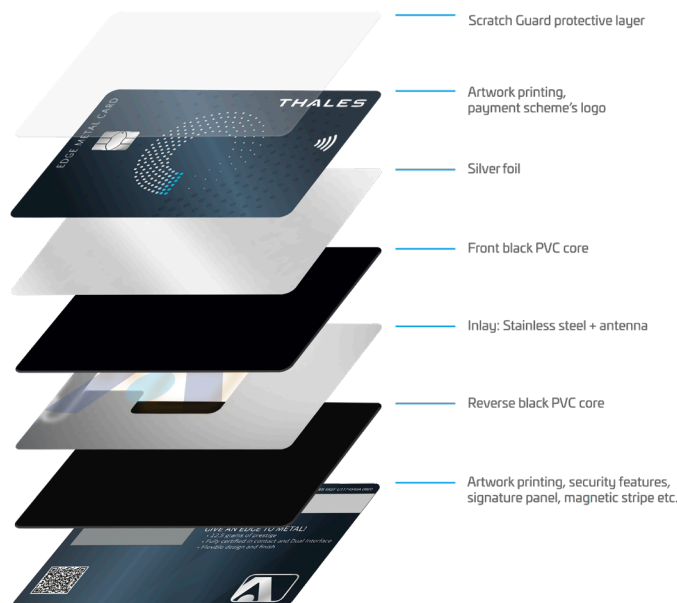


CARD FEATURES

Weight	: 12.5 grams (+/- 1 gram)
Metal	: Encapsulated stainless-steel core with silver foil
Edges	: Metallic
Sustainability	: Containing 90% post-consumer recycled stainless steel
Sound	: Muffled
Contactless Capable	: On both sides
Notch	: Available
Scheme Certification	: Full LOA   
Graphical Personalisation	: Laser (front and back) or DOD (back only)
Minimum Order Quantity	: 1,000 units



CARD STRUCTURE



PRINTING

Silkscreen
Standard offset printing
Premium printing

LOGOS AND PATTERNS

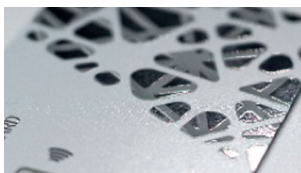
Printed in colours
Knocked out to foil
Tactile in matte or glossy
Engraved

BACKGROUND

Opaque
Metallic foil transparency

DESIGN EXAMPLES

Thales can support you throughout your Metal Card Design journey



Pattern knocked out to foil



Foil and tactile brushed in Premium Printing



Payment Scheme logo in Premium Printing



Engraved Payment Scheme logo

END-TO-END PROJECT GUIDANCE

From initial design to final production and delivery, Thales has the experience to manage and guide you through the process



Card design consultancy



From agile prototyping, to mass production



Worldwide laser perso equipments



All About Metal: Card holder digitalised laser signature



Innovative premium packaging



Express delivery options



D1 Digital modern issuance solutions



Recycling Services: From collection to revalorization