

# Full Metal DI (FMDI) Card

Ultimate luxury: distinctive weight  
and very metallic sound



Deliver ultimate luxury with the **Full Metal DI** - a 21g stainless steel card crafted for ultra-high-net-worth customers. Its signature metallic 'klonk' comes from a single, solid premium build.

No need to compromise front-side style for DI performance: the FMDI delivers both, outperforming all copycats.

# Full Metal DI (FMDI) Card



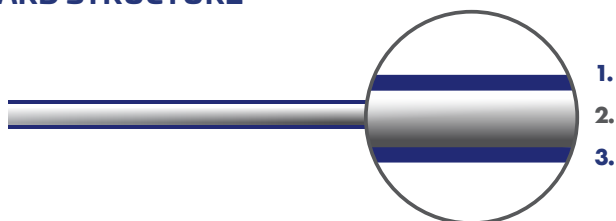
## CARD FEATURES

<b>Weight</b>	: 21 grams (+/- 1 gram)
<b>Metal</b>	: Stainless-steel core, metal on front
<b>Edges</b>	: Metallic
<b>Sustainability</b>	: Containing 65% post-consumer recycled stainless steel
<b>Sound</b>	: Very metallic klunk effect
<b>Contactless Capable</b>	: On both sides
<b>Notch</b>	: Available
<b>Scheme Certification</b>	: Chip waiver to request <b>VISA</b> <b>MasterCard</b> <b>DISCOVER</b>
<b>Graphical Personalisation</b>	: Laser (front and back) or DOD (back only)
<b>Minimum Order Quantity</b>	: 500 units

Entry level

Ultra high-end

## CARD STRUCTURE



- Thin PVC with digital color printing
- Stainless steel
- Thin PVC with offset color printing

### PRINTING

CMYK colours

### LOGOS AND PATTERNS

Mechanically engraved (flat or 3D)

Knocked out to metal

Tactile in matte or glossy

### BACKGROUND

Opaque

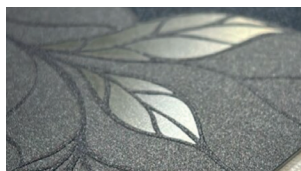
Metallic transparency

## DESIGN EXAMPLES

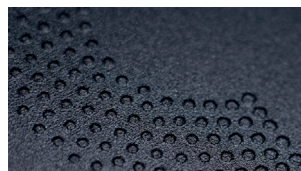
Thales can support you throughout your Metal Card Design journey



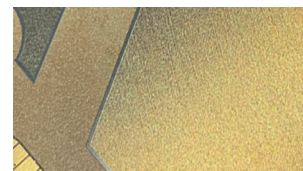
3D Mechanical engraving



Pattern knocked out to metal



Matte tactile dots



Metallic colours

## END-TO-END PROJECT GUIDANCE

From initial design to final production and delivery, Thales has the experience to manage and guide you through the process



Card design consultancy



From agile prototyping, to mass production



Worldwide laser perso equipments



All About Metal: Card holder digitalised laser signature



Innovative premium packaging



Express delivery options



D1 Digital modern issuance solutions



Recycling Services: From collection to revalorization