

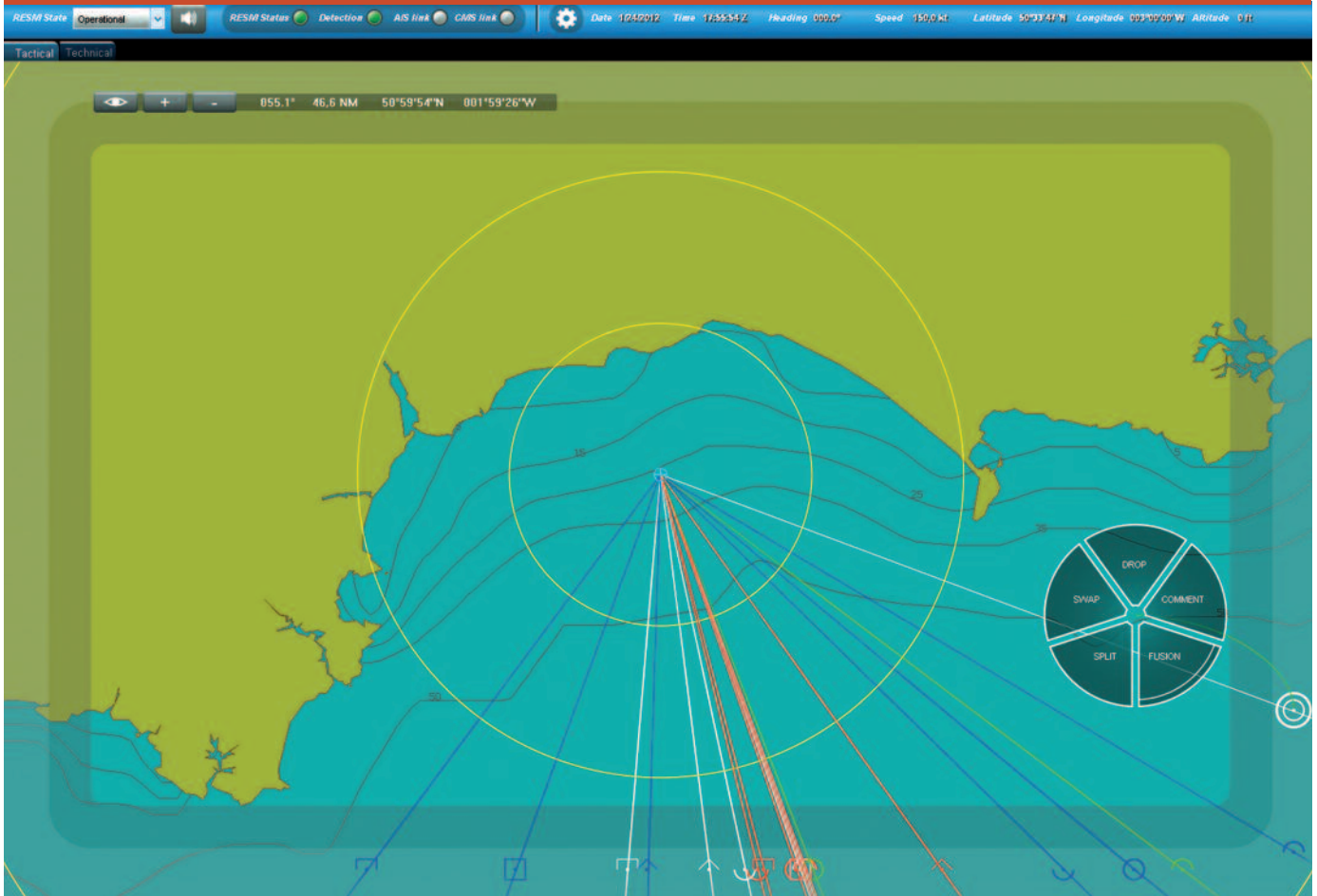
THE FULLY AUTOMATIC R-ESM SYSTEM FOR SMALL AND OFFSHORE PATROL VESSELS

- ▶ Vigile LW is the latest generation Radar Electronic Support Measures (R-ESM) system from Thales. Drawing on Thales' excellent pedigree in Naval EW systems and designed explicitly for small and Offshore Patrol Vessels, Vigile LW provides a real-time tactical view of the surrounding area – delivering effective situational awareness and threat warning.
- ▶ Vigile LW detects, identifies and displays air and surface threats in real time, providing a powerful capability wherever tactical situational awareness is needed.

Whether patrolling national coastlines or protecting EEZs and shipping lanes, thanks to Thales' world-leading deinterleaving and signal processing technologies, Vigile LW will provide immediate, automatic warning of high priority threats. Vigile LW can be used to control the platform countermeasures system to create an effective self-defence capability.

VIGILE LW

Lightweight R-ESM System





VIGILE LW

The fully automatic R-ESM System for small and Offshore Patrol Vessels

Vigile LW's impressive performance in complex littoral environments, combined with its low power consumption and compact, lightweight design, make it perfectly suited to small vessels.

MAIN CHARACTERISTICS

- Surface and air surveillance
- Operation in complex littoral environments
- Accurate Direction Finding
- Picture compilation with Radar display option
- Picture compilation with C-ESM option
- Passive automatic detection and identification of emitters in the E-J bands
- Automatic audible and visual threat alarm
- Fast reaction time - instant tactical situational picture
- Easy-to-load library via USB memory key or CD
- Low size, weight and power consumption means less space taken both on mast and in-board
- Can record data for post mission analysis, library updates and playback at track and pulse level
- Network-ready for enhanced location techniques
- Control of decoy system
- Modern COTS-based design for high reliability, availability and ease of support
- Able to trigger Decoy Launching System (DLS) for self-defence

ENVIRONMENTAL DATA

Receiver / Processor unit

- Operating temperature range 0°C to +50°C
- Non-operating temperature range - 40°C to +55°C
- Weight 20 kg

Antennas

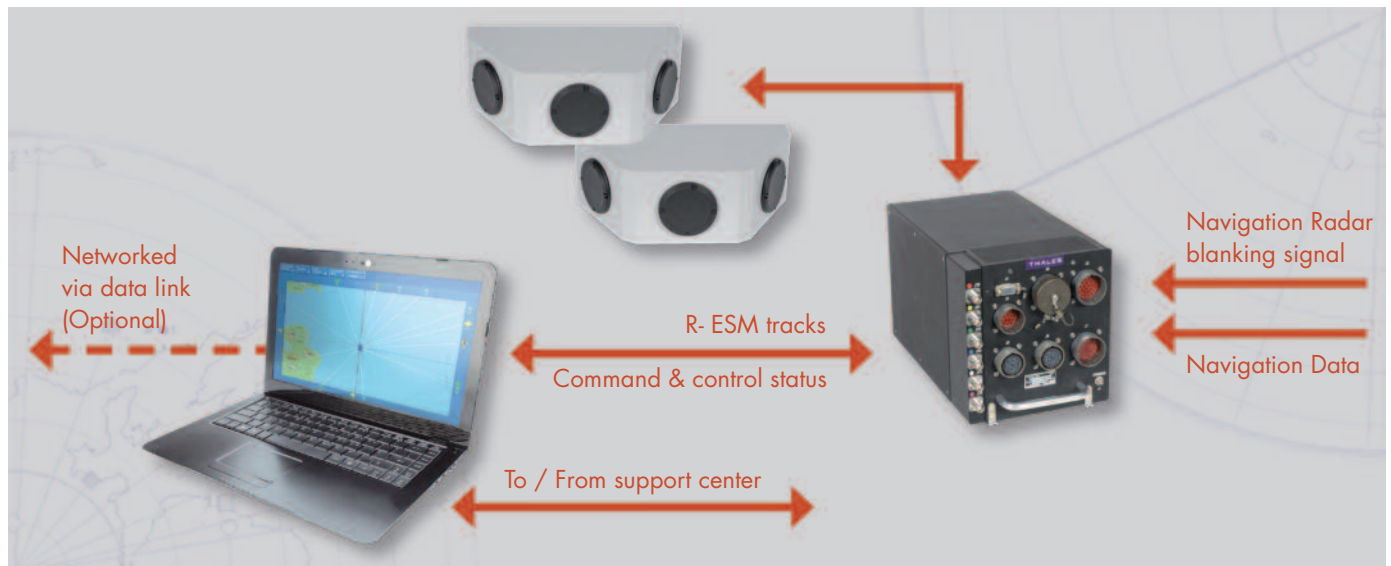
- Operating temperature range - 40°C to +65°C
- Non-operating temperature range - 40°C to +70°C
- Weight (each) 0.5 kg

Prime power

- 28 V DC & 220 +/- 20 V AC 50 Hz

PERFORMANCE DATA

- Frequency coverage 2-18 GHz
- Near 100 % Probability Of Intercept (POI)
- Azimuth coverage 360°
- Elevation coverage 60°
- Maximum pulse density 1 MPPS
- Bearing accuracy 6° RMS
- Maximum simultaneous targets 200
- Reaction time to lock-on threat < 1s
- Library entries 10,000
- Track level recording capacity Up to 7 days
- Pulse level recording capability Dependent on hard disk size



THALES SYSTÈMES AÉROPORTÉS

2, Avenue Gay-Lussac – 78851 Elancourt Cedex – France
Tel.: + 33 (0)1 34 81 95 96 – Fax: + 33 (0)1 34 81 65 88

THALES UK

Manor Royal, Crawley – West Sussex RH10 9HA - United Kingdom
Tel.: +44 (0)1293 580000 – Fax: +44 (0)1293 580111