

## FEATURES

- Industrial grade for a compact footprint
- Unmatched energy stability and beam pointing
- High contrast using XPW filter
- Tango Panorama software
- Option : beam transport to experimental area

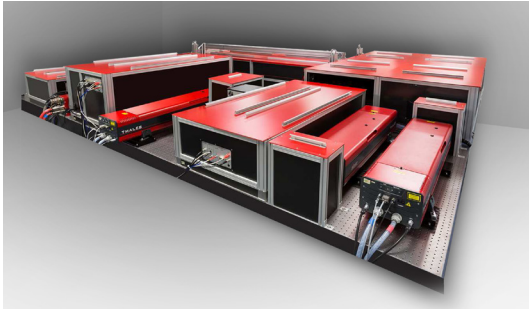
## APPLICATIONS

- Electrons and ions acceleration
- Plasma Physics
- VUV-Xray generation
- High order harmonic generation
- Time resolved spectroscopy

# QUARK 200

Ultrafast Ti:Sa Laser Series





# QUARK 200

Ultrafast Ti:Sa Laser Series

The world reference for 200 TW laser with demonstrated specification and industrial reliability dedicated to laser facilities. Designed with PW level proven technologies. Ready for upgrade to the highest peak power.

## Specifications

<b>Repetition rate (Hz)*</b>	Up to 5
<b>Peak Power (TW)</b>	≥ 200
<b>Central Wavelength (nm)</b>	~ 800
<b>Energy per pulse (J) After compression</b>	≥ 5
<b>Pulse duration FWHM (fs)</b>	Down to 25
<b>Pulse to pulse energy stability (% rms)</b>	≤ 1
<b>Contrast Ratio (ps) obtained with XPW</b>	1 : 10 <sup>5</sup> under 5
	1 : 10 <sup>8</sup> under 30
	1 : 10 <sup>10</sup> under 100
<b>Strehl Ratio</b>	≥ 0.85 (with deformable mirror)

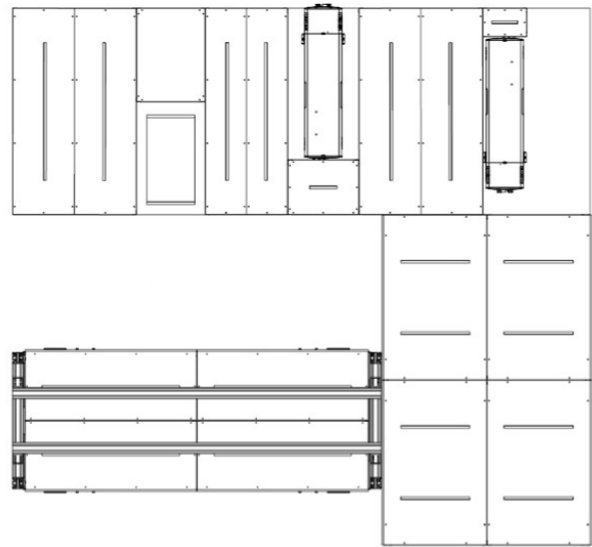
\*Custom repetition rate on demand

## Physical characteristics

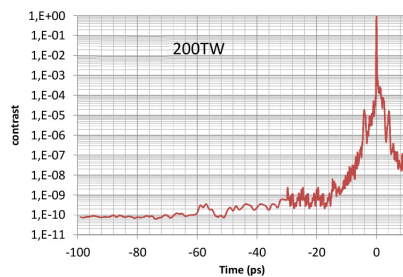
### QUARK 200 layout example(\*)

Table size: 3.9 x 4.2 m<sup>2</sup> (12.8 x 13.8 ft<sup>2</sup>)

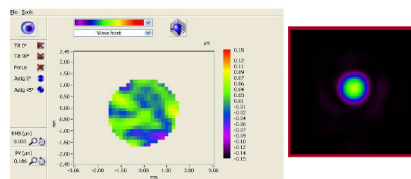
(\*) Other configurations are available on request. Specifications are dependent upon the chosen configuration and options



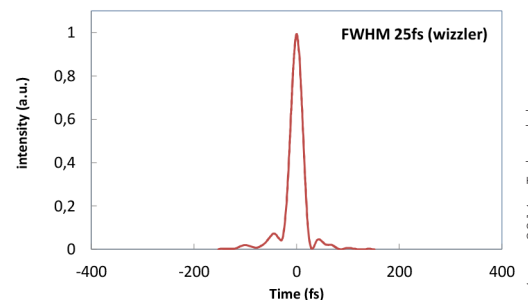
## Typical measurements



Contrast measurement with XPW



Strehl ratio > 0.9 and far field



Pulse duration

Europe  
Thales Optronique S.A.S.  
2, avenue Gay-Lussac – CS 90502  
78995 Élancourt Cedex – FRANCE  
Tél. : + 33 (0)1 30 96 89 45  
Fax : +33 (0)1 30 96 89 59  
thales-laser@fr.thalesgroup.com

Japan  
Thales Japan K.K.  
Akasaka Tameike Tower 8F.,  
2-17-7, Akasaka, Minato-ku,  
Tokyo 107-0052 - JAPAN  
Tel : +81 3 6234 8150  
Fax: +81 3 6234 8101

North America  
Thales Components Corporation Inc.  
40G Commerce Way, PO Box 540  
Totowa, New Jersey 07511-0540 USA  
Tel.: + 1 (973) 812-9000  
Fax: +1 (973) 812-9050